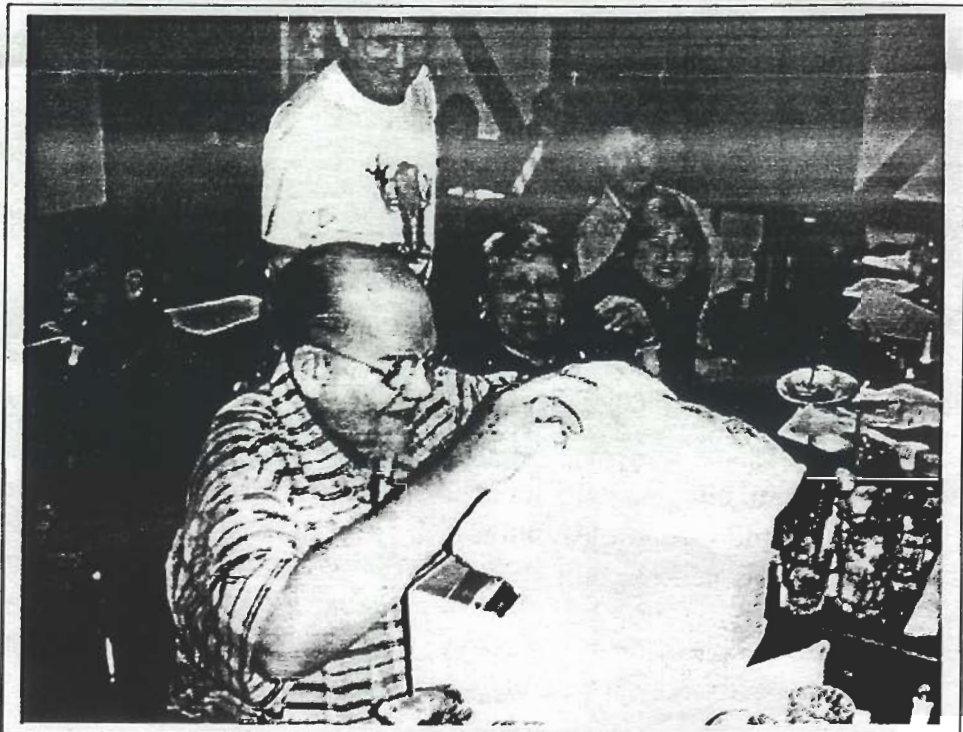




## 1999 Christmas Party Highlights



**Barbara Tansey receives the prestigious Golden Trowel Award.**



**Jim Lord opens a box-full of slightly collectable Florida postcards.**

Dick relayed this information to me and we decided to go and examine the site. I believe it took us two trips before we found it. It did not have the usual tall ficus trees protruding above the tree line like most 'Glades sites. After hacking our way through the thick underbrush on the perimeter of the site we came upon the main higher ground and immediately saw where his friends had been digging. After first looking around I started checking on their spoil pile. I remarked to Dick that these guys sure didn't care for pottery - there were pieces of incised pottery scattered throughout the pile. Dick reminded me they were just after treasure and beads.

I continued to go through the spoil, saving what I thought was interesting. I came upon a piece of pottery that was shaped like a heart - but one lobe was broken off. I showed it to Dick and he remarked that he had never seen a heart before. It appears to be made from a piece of Glades Plain pottery. It measures 4 cm top to bottom and 3.2 cm at its widest point (approximately 1 1/2" x 1 1/4"). This artifact remained in my collection for many years.

In March of 1989 I was talking to Jim Lord about artifacts and mentioned this particular one. We decided to go back to this site as I always wanted to locate the missing lobe. We found the site and by the condition of it no one had been there since the last time. We could still determine where the old pits and spoil piles were located. We began scratching around and that's when Jim discovered his famous bone pin with a bas-relief carving on it (FAS Vol.42, No. 3, Sept. 1989). The carving resembled the Key Marco Cat and we were really excited about it. However, some professionals believe it to be the carving of an opossum. At the end of the day we still hadn't found the missing heart lobe.

One day while researching information at the library I ran across an article which contains a reference to a heart. The article was from *The Florida Indian and his Neighbors*, papers delivered at an anthropological conference held at Rollins College, April 9 and 10, 1949. Edited by John W. Griffin, Winter American Center, Rollins College, Winter Park, Florida, 1949. In that book on page 97 is the following, "for example one of the strongest connections to Middle America is the representation of the skull, the heart, the hand and long bones..."

In March of 1989 I had the opportunity to visit Ray Childress on the West Coast of Florida and view some of his collection. One of his artifacts is a heart shaped object. It is about 2 cm (3/4") high and is made out of some kind of greenish stone-like material. I did not have the opportunity to question him about it. But what impressed me was the fact that it was a heart and was found in South Florida.

Does the heart represent a connection with Middle America perhaps through the Mississippian culture? Considering the bone carving and heart object there may be more significance to this site than just an Everglades hunting site.

---

### **Screen like a Banshee!**

Please come out and help screen artifact-rich dirt rescued from the Bamboo Site, located at the Everglades Outpost in Homestead. Any help is appreciated and no experience is necessary!

**Address: 35601 S.W. 192 Ave.**

**Call 305-247-8000 for directions.**

(PS - wear something that can get very dirty...)

---

**Hats Off** to John Risiak and Bob Carr for their articulate rebuttals in *Archaeology Magazine's* Nov-December 1999 and Jan-February 2000 issues, countering Jerald Milanich's story, "Much Ado About a Circle," which appeared in the magazine's September/October, 1999 issue.

## FLORIDA ANTHROPOLOGICAL SOCIETY

### FAS membership application/renewal form

YES, I want to join **FAS**. I enclose \$ \_\_\_\_\_

INDIVIDUAL, \$25    FAMILY, \$30    INSTITUTIONAL, \$25  
 SUSTAINING, \$40 OR MORE    PATRON, \$100    LIFE, \$500

NAME \_\_\_\_\_

ADDRESS \_\_\_\_\_

CITY \_\_\_\_\_ STATE \_\_\_\_\_

ZIP CODE \_\_\_\_\_

PHONE (W) \_\_\_\_\_ (H) \_\_\_\_\_

Mail to:      FAS Membership  
                 Terry Simpsom, CGCAS  
                 P.O. Box 82255  
                 Tampa, Florida 33682

### Site Restoration of Indian Key

Restoration work is continuing through Spring at the Indian Key site. Anyone interested in volunteering please contact Seth Lefkow at (305) 868-2828 for directions.

#### RETURN ADDRESS:

The Archaeological Society of Southern Florida  
Barbara Tansey, President  
2495 NW 35<sup>th</sup> Avenue  
Miami, Florida 33142

**NEXT MEETING:** January 13<sup>th</sup>, 7:30 p.m.

**SPEAKER:** Gypsy Graves, Archaeologist and world traveler.

#### OFFICERS:

Barbara Tansey, President; Jim Lord, Vice President;  
Brian Conesa, Treasurer; Manny Meland, Secretary

#### BOARD OF DIRECTORS:

Marlene Adams, Bob Carr, Pat Cervi, George Cummings, Darrell Cunningham, Seth Lefkow, Beth Read

#### NEWSLETTER EDITOR:

Lisa Weier can be reached at (305) 559-0411, or [bigpicture14@ecoolworks.com](mailto:bigpicture14@ecoolworks.com), for questions, comments, submissions or (oops!) corrections.

## ARCHAEOLOGICAL SOCIETY OF SOUTHERN FLORIDA

### ASSF membership application/renewal form

I have read and will abide by the Objectives and Code of Ethics of ASSF listed below, and I wish to apply for membership.

Name \_\_\_\_\_

Address \_\_\_\_\_

City \_\_\_\_\_ State \_\_\_\_\_

Zip Code \_\_\_\_\_

Phone (w) \_\_\_\_\_ (h) \_\_\_\_\_

**CHECK ONE:**    New Member    Renewal

**CHECK ONE:**    Individual (\$20)    Family (\$25)

Mail to:      Barbara Tansey  
                 ASSF Membership  
                 2495 N.W. 35<sup>th</sup> Avenue  
                 Miami, FL 33142

#### ASSF OBJECTIVE:

To provide a formal means by which individuals and institutions interested in archaeological and anthropological studies in South Florida and related areas may come together for mutual benefit.

FIRST CLASS



Mailing Address

