



THE ARCHAEOLOGICAL SOCIETY OF SOUTHERN FLORIDA

CHAPTER

THE FLORIDA ANTHROPOLOGICAL SOCIETY

---

Volume 11 Number 8 Newsletter AUGUST 1986

---

President: Sue Goldman Editor: Debra Goldman

---

BOARD MEETING

7:30 p.m., Monday August 4, 1986

The August Board of Directors meeting will be held on Monday, August 4, 1986 at 7:30 p.m. at Beth Read's office, 1489 South Miami Avenue, Miami. All voting members are welcome to attend.

AUGUST MEMBERSHIP MEETING

8:00 p.m., Friday, August 15, 1986

Roger Elliott Mittleman, M.D., will speak to the membership and guests on the role of the medical examiner in the handling and identification of human remains, including the use of facial reconstruction and photography. Dr. Mittleman, a long time Dade County resident, is an associate medical examiner with Dr. Joseph H. Davis, Chief Medical Examiner of Dade County. Educated at the University of Miami School of Medicine, his pathology internship was at Peter Bent Brigham Hospital in Boston, and pathology residency at Jackson Memorial Hospital. Dr. Mittleman lectures in Forensic Pathology at the Southeast Florida Institute of Criminal Justice, and is Clinical Assistant Professor of Pathology at the University of Miami School of Medicine. This is an encore presentation for the benefit of our new members and for the renewed enjoyment of those who heard Dr. Mittleman several years ago. You will be entertained, startled and perhaps a little uneasy, but most of all, educated and informed by an expert in his field. Slides and specimens will add to the graphic presentation, with some hands-on exhibits.

The meeting will be held under the chickee at the Audubon House, 5530 Sunset Drive, South Miami at 8:00 p.m.

MARILYN'S MILLIONS

Marilyn Masson's talk on Colha was terrific! Marilyn took part in the excavations of Colha, a Mayan lithic tool production site located in northern Belize. The millions of chert flakes found in comparatively small areas supports craft specialization and mass production. Her enthusiasm never waned, even with her listeners fanning themselves with her charts. Thanks Marilyn!

COMMITTEE REPORTS

EXHIBITS

Norma Dieppa has begun planning our exhibit for the Harvest in November. With Florida's 10,000 year old past our exhibit can be better than ever. Norma needs volunteers and is welcoming suggestions. Call her at 687-0935.

CABLE TV GROUP

Ed Bell was at the Cheetum Site, camera and microphone in hand, to film for our new cable show, "In Search of Our Past". Christine Newman, project director, took Ed and his camera on a "tour" of the area. Anyone interested in working on this committee should contact Ed at 448-6962.

## SITE REPORTS

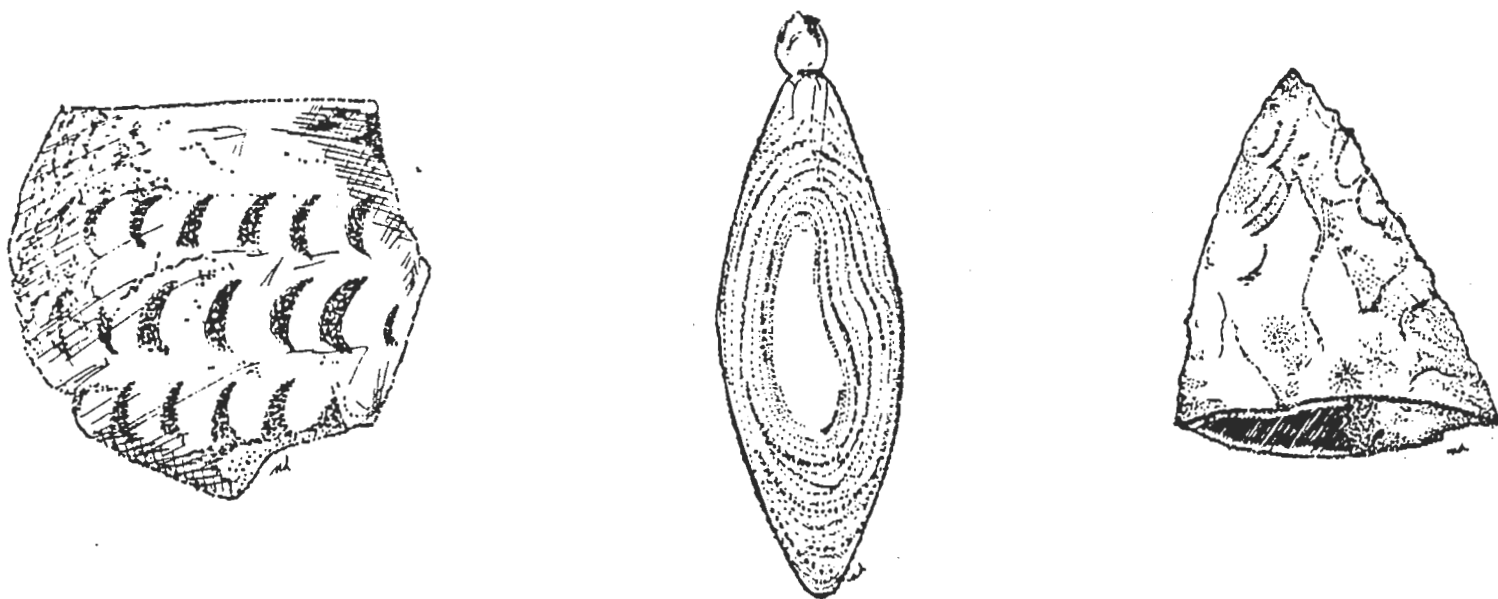
### CHEETUM SITE:

Work is nearly completed at the Cheetum Site. All visible human remains have been removed from the burial area for eventual re-interment. Burials were also found inside of the concretion, between 10 and 20 cm. At least six, possibly eight individuals are represented. Charcoal recovered from underneath a skull has been sent for radio carbon dating. Results should be available in 30 days.

Some very interesting artifacts have turned up recently. Two shell pendants were found by Dennis, one in the southwest spoil area (see illustration) and the other in our "parking lot". A solificied coral point (see illus.) was rescued from the bulldozers by Jim McLellan and Wes Coleman. Unfortunately, its base is missing. The point is thought to originate in the Tampa Bay area. An unusual punctated St. Johns series shard (see illus.) was also found by Wes, circa 500 B.C., plus a fiber tempered shard, circa 1500 - 2000 B.C. This makes the Cheetum Site only the 4th in Dade County to contain fiber tempered ware.

Thanks to Dennis, Jim, John Carruthers, Jim Lord, Bill Lyons and John the photographer for all of your help. Thanks to Norma Dieppa for the excellent illustrations below.

Piles of midden soil will be moved to Wes' house within 2 weeks, ready for cleaning and sorting.



### CUTLER FOSSIL SITE:

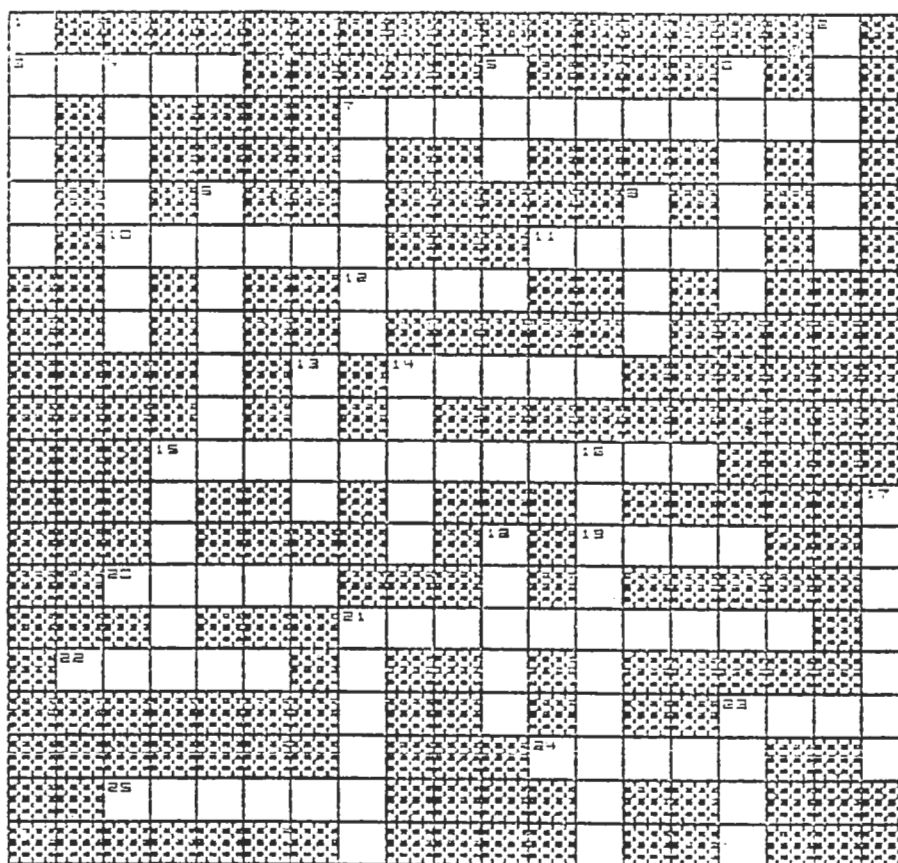
Two human jaw fragments were uncovered last Friday, 7/25. One fragment had two teeth attached. Field work will continue until October 31, 1986.

Help is needed in the lab with cleaning and sorting. The lab is opened Monday through Friday, 8 - 4:30. Ruth is willing to open the lab on Saturdays if there is enough interest. Call her at 252-0069.

## NEW MEMBERS

Welcome to our most recent members, BARBARA PRITCHARD, LOIS COWAN, KATHY ECHROLL and ILENE SAGER. Looking forward to meeting you.

ARCHAEOLOGY

*W. S. M.*

## ACROSS CLUES

3. Material for tempering pottery
7. Bones in the same position in which they were during the life of a mammal
10. A small but highly organized society of Indians from the Caloosahatchee estuary
11. That portion of an artifact beyond the base or tang of a projectile
12. A spongy porous limestone formed by precipitation of calcite from water of springs and streams
14. A fragment removed from a larger stone by percussion or pressure
15. The study of stratified rocks, their nature, distribution, and interpretation
19. A fossil replica of the original usually quartz or calcite
20. Editor of The Florida Anthropologist
21. An artifact with a wide distribution in space but a restricted one in time
22. A large shell producing mollusk used as tools and vessels by Indians
23. A skeletal material commonly used for artifacts
24. Ancestral precursor of corn
25. Stone implement used for grinding corn

## DOWN CLUES

1. An image or representation, usually of an animal
2. A thickening of the centre-line of a bronze weapon to add the strength that material lacks
4. Conch
5. A verb turned noun describing archaeological activity
6. Layer
7. A spear thrower
8. Elongated stone or shell artifact often grooved or drilled
9. Ancestral precursor of the "corn cob"
13. A finely graded earthy material used in making pottery
14. A hard but brittle stone found in chalk or limestone
15. A device used for separating soil from collectible material
16. The use of pigments to create an image upon rock or some other surface
17. Carved or engraved; deeply notched
18. A stone for grinding corn
21. An implement used for scraping and uncovering
23. Stone, shell, bone, wood, or ceramic ornaments

DATES TO REMEMBER:

- August 4: August Board of Directors Meeting, Beth Read's office, 1489  
Miami Avenue, Miami, 7:30 p.m.
- August 15: Membership Meeting, Chickee, Audubon House, 5530 Sunset Drive,  
South Miami, 8:00 p.m.

CUTLER FOSSIL LAB: M - F, 8 - 4:30 p.m., 252-0069



101 West Flagler Street  
Miami, Florida 33130



Emily Perry Dieterich  
6230 Grant Court  
Hollywood, FL 33024